

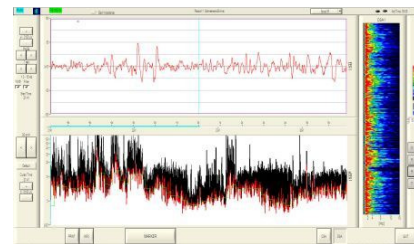
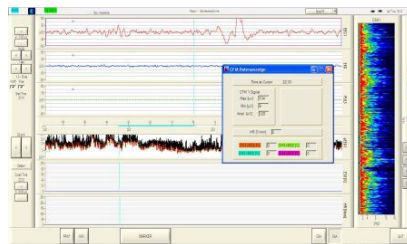
Unique aEEG

Cerebral Function Monitor



Features

- Light weight 400g recorder
- 2 to 4 channel recording
- Raw data Display
- ECG and Respiration
- rSO2 trend
- CFM trend for 2 channel
- Unipolar or Bipolar recording
- User definable alarm limits
- Density Spectral Array Display (DSA)
- Compressed Spectral Array Display (CSA)
- Online and offline event marking
- Internal Li-Ion Battery
- Bluetooth® Interface
- Network interface
- Digital video



The Unique CFM is a device for monitoring brain activity on newborn babies. It is typically a 1 or 2 channel recording with a common reference. This signal is filtered, logarithmically compressed, and rectified. The trace speed is selectable from 1cm/h to 100 cm/h. The display shows the Raw EEG, Spectral Density Array (DSA) and the CFM Compressed data simultaneously. The data are transferred via Bluetooth interface to the nurse station and can show up to 4 patients on one screen at the same time.